



MASTER LEDtube EM/ Mains

MASTER LEDtube 1200mm HO 14W840 T8

The Philips MASTER LEDtube integrates a LED light source into a traditional fluorescent form factor. Its unique design creates a perfectly uniform visual appearance which cannot be distinguished from traditional fluorescent. This product is the ideal solution for up lighting in general lighting applications.

Warnings and Safety

• -

Product data

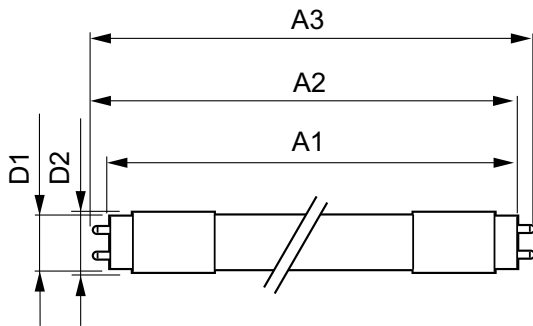
| General Information | | Power Consumption | |
|--|---------------------------------|---------------------------|---------------|
| Cap base | G13 [Medium Bi-Pin Fluorescent] | Power Consumption | 14 W |
| Nominal lifetime | 50,000 h | Lamp current (max.) | 65 mA |
| Switching Cycle | 200,000 | Lamp current (min.) | 60 mA |
| Lighting Technology | LED | Starting time (nom.) | 0.5 s |
| EU RoHS compliant | Yes | Warm-up time to 60% light | 0.5 s |
| Light Technical | | Power Factor (Fraction) | 0.9 |
| Colour Code | 840 [CCT of 4000K] | Voltage (nom.) | 220-240 V |
| Luminous Flux | 2,100 lm | Temperature | |
| Correlated Colour Temperature | 4000 K | Ambient temperature range | -20°C to 45°C |
| Colour consistency | <6 | T-Case maximum (nom.) | 55 °C |
| Colour rendering index (CRI) | 83 | Controls and Dimming | |
| LLMF at end of nominal lifetime (nom.) | 70 % | Dimmable | No |
| Operating and Electrical | | Mechanical and Housing | |
| Line Frequency | 50 to 60 Hz | Product length | 1,200 mm |
| Input frequency | 50 to 60 Hz | | |

MASTER LEDtube EM/Mains

| Approval and Application | |
|------------------------------------|--|
| Energy-saving product | Yes |
| Approval marks | CE marking RoHS compliance KEMA Keur certificate |
| Energy consumption kWh/1,000 hours | 14 kWh |
| Product Data | |
| Order product name | MAS LEDtube 1200mm HO 14W840 T8 |
| Full product name | MASTER LEDtube 1200mm HO 14W840 T8 |

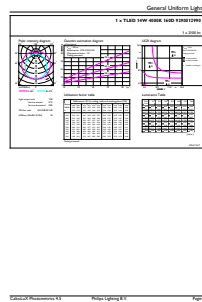
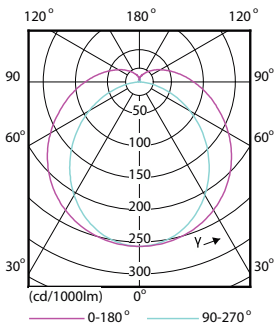
| | |
|-----------------------------------|-----------------|
| Full EOC | 871869668720800 |
| Order code | 68720800 |
| Material no. (12 NC) | 929001299002 |
| SAP numerator – quantity per pack | 1 |
| EAN/UPC – Product/Case | 8718696687208 |
| Numerator – packs per outer box | 10 |
| EAN/UPC – Case | 8718696687215 |

Dimensional drawing



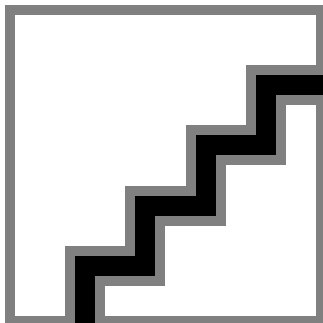
| Product | D1 | D2 | A1 | A2 | A3 |
|---------------------------------|----------|-------|------------|------------|------------|
| MAS LEDtube 1200mm HO 14W840 T8 | 25.78 mm | 28 mm | 1,198.2 mm | 1,205.3 mm | 1,212.4 mm |

Photometric data



Light Distribution Diagram - MAS LEDtube 1200mm HO 14W840 T8

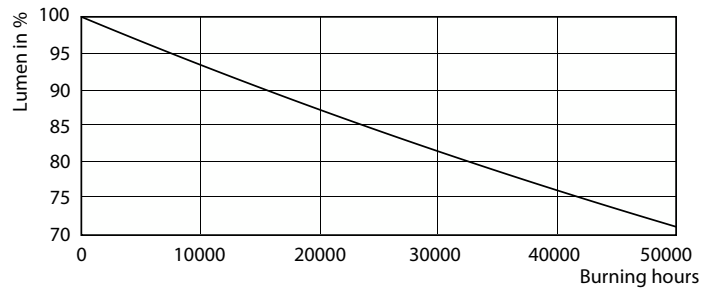
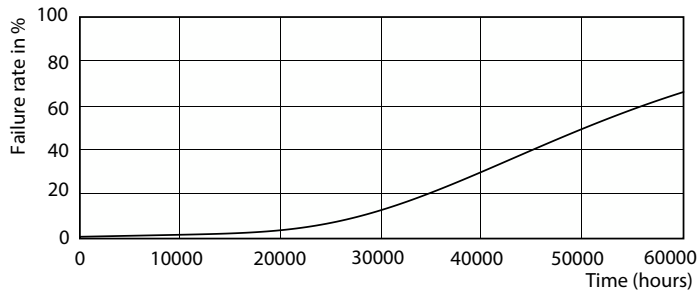
General uniform lighting - MAS LEDtube 1200mm HO 14W840 T8



Spectral Power Distribution Colour - MAS LEDtube 1200mm HO 14W840 T8

MASTER LEDtube EM/Mains

Lifetime



Life Expectancy Diagram - MAS LEDtube 1200mm HO 14W840 T8

Lumen Maintenance Diagram - MAS LEDtube 1200mm HO 14W840 T8

