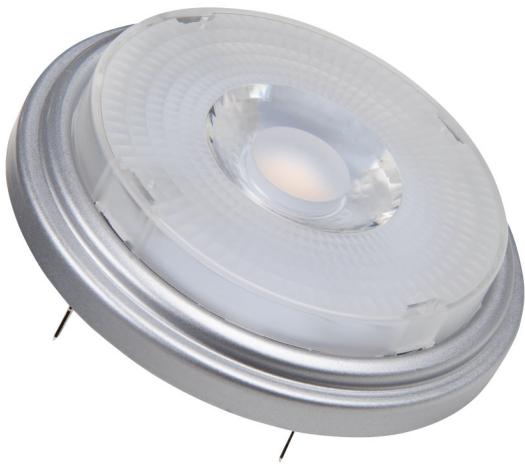


PRODUCT DATASHEET

SST AR111 50 24° 7.3 W/2700K G53 GLOWdim

PARATHOM PRO AR111 | Professional LED Lamps with added function



AREAS OF APPLICATION

- Shops
- Shop windows
- Hotels, hospitality
- Museums, art galleries
- Exhibition rooms
- Residential interiors
- Luxurious living areas
- Outdoor applications only in suitable luminaires

PRODUCT BENEFITS

- Provides an especially warm light when dimmed down
- Short payback period thanks to low energy consumption and maintenance costs
- Premium light quality thanks to high color rendering index and narrow binning
- Can be easily combined with other GLOWdim products in one application

PRODUCT FEATURES

- Professional LED alternative to AR111 halogen lamps
- Good color rendering index $R_a \geq 90$
- Mercury-free lamps
- Dimming changes light color from warm white (2,700 K) to extra warm white (1,800 K)



TECHNICAL DATA

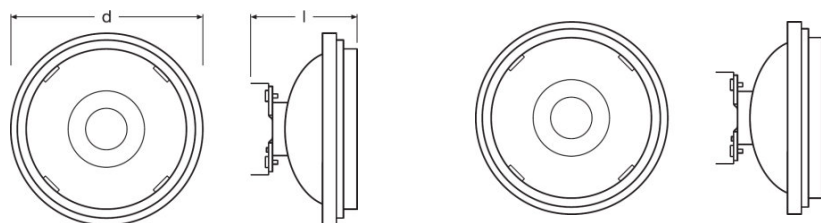
Electrical data

| | |
|---|------------|
| Rated wattage | 12.00 W |
| Nominal wattage | 7.30 W |
| Nominal voltage | 12 V |
| Claimed equiv. conventional lamp power | 50 W |
| Max. lamp no. on circuit break. 10 A (B) | 6 |
| Max. lamp no. on circuit break. 16 A (B) | 10 |
| Operating frequency | 50...60 Hz |

Photometrical data

| | |
|--|------------|
| Lumen main.fact.at end of nom.life time | 0.70 |
| Light color (designation) | Warm White |
| Color temperature | 2700 K |
| Luminous flux | 450 lm |
| Color rendering index Ra | ≥90 |
| Nominal luminous flux | 450 lm |
| Rated color temperature | 2700 K |

Dimensions & weight



| | |
|-----------------------|---------|
| Overall length | 62.0 mm |
|-----------------------|---------|

Temperatures & operating conditions

| | |
|---|--------------|
| Ambient temperature range | -20...+40 °C |
| Maximum temperature at tc test point | 83 °C |

Lifespan

| | |
|-------------------------------|---------|
| Nominal lamp life time | 40000 h |
| Rated lamp life time | 40000 h |

| | |
|-----------------------------------|--------|
| Number of switching cycles | 100000 |
|-----------------------------------|--------|

Additional product data

| | |
|------------------------------------|--|
| Base (standard designation) | G53 |
| Mercury-free | Yes |
| Product remark | All technical parameters apply to the entire lamp/Due to the complex production process for light-emitting diodes, the typical values shown for the technical LED parameters are purely statistical values that do not necessarily match the actual technical parameters of each individual product, which can vary from the typical value |

Capabilities

| | |
|-----------------|-----|
| Dimmable | Yes |
|-----------------|-----|

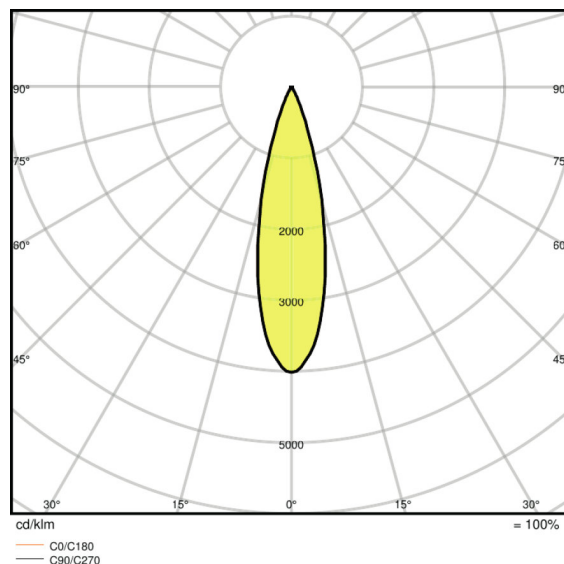
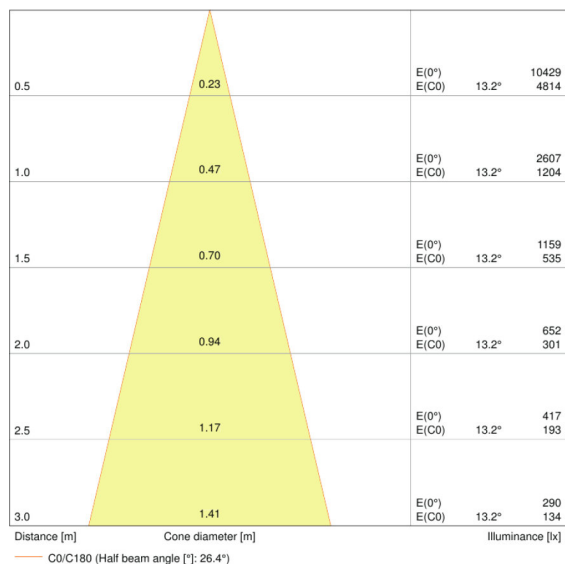
Certificates & standards

| | |
|--------------------------------|---|
| Energy efficiency class | A |
|--------------------------------|---|

Country-specific categorizations

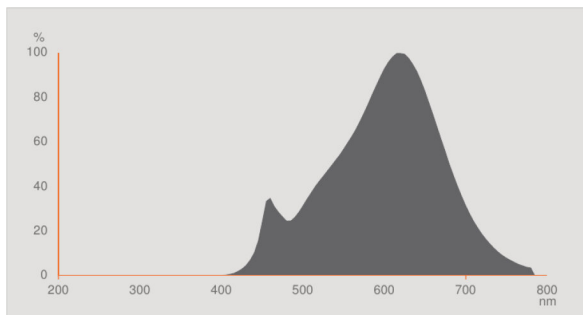
| | |
|------------------------|-----------------|
| Order reference | LED111GD5024 12 |
|------------------------|-----------------|

Light Distribution



LDC typ cone

LDC typ polar



Spectral power distribution

LOGISTICAL DATA

| Product code | Packaging unit (Pieces/Unit) | Dimensions (length x width x height) | Gross weight | Volume |
|---------------|------------------------------|--------------------------------------|--------------|----------------------|
| 4058075104891 | Folding carton box 1 | 86 mm x 86 mm x 112 mm | 246.00 g | 0.83 dm ³ |
| 4058075104907 | Shipping carton box 6 | 275 mm x 185 mm x 130 mm | 1569.00 g | 6.61 dm ³ |
| 4058075448964 | Folding carton box 1 | 113 mm x 66 mm x 113 mm | 246.00 g | 0.84 dm ³ |
| 4058075448971 | Shipping carton box 6 | 238 mm x 208 mm x 123 mm | 1263.00 g | 6.09 dm ³ |

The mentioned product code describes the smallest quantity unit which can be ordered. One shipping unit can contain one or more single products. When placing an order, for the quantity please enter single or multiples of a shipping unit.

REFERENCES / LINKS

For dimming conformity see

- ▶ www.ledvance.com/dim

For further products and actual information concerning LED lamps see

- ▶ www.ledvance.com/ledlamps

Further information see

- ▶ www.ledvance.com/low-voltage-ledlamps

DISCLAIMER

Subject to change without notice. Errors and omission excepted. Always make sure to use the most recent release.