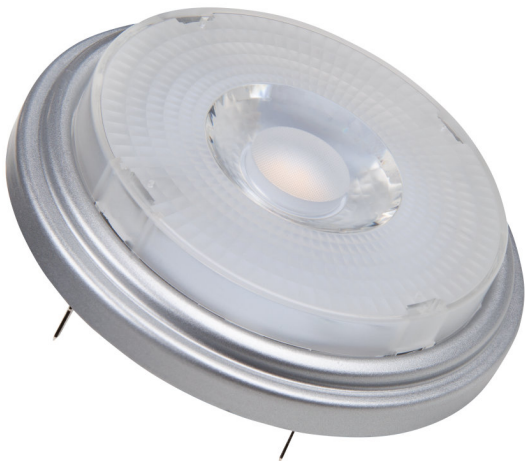


PRODUCT DATASHEET

PPRO AR111 100 24° 13.3 W/2700K G53

PARATHOM PRO AR111 | LED reflector lamps AR111 with retrofit pin base



AREAS OF APPLICATION

- Shops
- Shop windows
- Hotels, hospitality
- Museums, art galleries
- Exhibition rooms
- Residential interiors
- Luxurious living areas
- Outdoor applications only in suitable luminaires

PRODUCT BENEFITS

- Short payback period thanks to low energy consumption and maintenance costs
- Premium light quality thanks to high color rendering index and narrow binning
- Easy replacement of halogen lamps due to compact design and single optic design

PRODUCT FEATURES

- Professional LED alternative to AR111 halogen lamps
- Mercury-free lamps
- Dimmable (with many common dimmers, see also www.ledvance.com/dim)
- Single optic design
- Very good color rendering index: $R_a >$



TECHNICAL DATA

Electrical data

Rated wattage	13.30 W
Nominal wattage	13.30 W
Nominal voltage	12 V
Claimed equiv. conventional lamp power	100 W
Max. lamp no. on circuit break. 10 A (B)	3
Max. lamp no. on circuit break. 16 A (B)	5
Operating frequency	50...60 Hz
Power factor λ	> 0.80

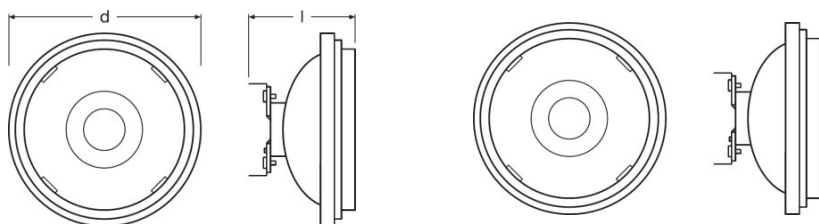
Photometrical data

Nominal luminous flux	950 lm
Rated luminous flux	950 lm
Lumen main.fact.at end of nom.life time	0.70
Light color (designation)	Warm White
Color temperature	2700 K
Luminous flux	950 lm
Color rendering index Ra	97
Standard deviation of color matching	≤ 4 sdcn
Rated color temperature	2700 K
Color rendering index Ra	97
Nominal useful luminous flux 90°	1100 lm
Rated useful luminous flux 90°	1100 lm
Rated peak intensity	2150 cd

Light technical data

Beam angle	24 °
Warm-up time (60 %)	< 0.10 s
Starting time	< 0.1 s
Nominal beam angle	24 °
Rated beam angle (half peak value)	24.00 °

Dimensions & weight



Overall length	62.0 mm
Diameter	110.7 mm
Outer bulb	AR111
Length	62.0 mm
Maximum diameter	111.0 mm

Temperatures & operating conditions

Ambient temperature range	-20...+40 °C
Maximum temperature at tc test point	83 °C

Lifespan

Nominal lamp life time	40000 h
Rated lamp life time	40000 h
Number of switching cycles	100000

Additional product data

Base (standard designation)	G53
Mercury content	0.0 mg
Mercury-free	Yes
Show WEEE picto	Yes
Product remark	All technical parameters apply to the entire lamp/Due to the complex production process for light-emitting diodes, the typical values shown for the technical LED parameters are purely statistical values that do not necessarily match the actual technical parameters of each individual product, which can vary from the typical value

Capabilities

Dimmable	Yes
-----------------	-----

Certificates & standards

Energy efficiency class	A
Energy consumption	15 kWh/1000h

Country-specific categorizations

Order reference	LPAR11110024 13
-----------------	-----------------

LOGISTICAL DATA

Product code	Packaging unit (Pieces/Unit)	Dimensions (length x width x height)	Gross weight	Volume
4058075448742	Folding carton box 1	113 mm x 66 mm x 113 mm	191.00 g	0.84 dm ³
4058075448759	Shipping carton box 6	238 mm x 208 mm x 123 mm	1275.00 g	6.09 dm ³

The mentioned product code describes the smallest quantity unit which can be ordered. One shipping unit can contain one or more single products. When placing an order, for the quantity please enter single or multiples of a shipping unit.

REFERENCES / LINKS

For dimming conformity see

▶ www.ledvance.com/dim

For Guarantee see

▶ www.ledvance.com/guarantee

For further products and actual information concerning LED lamps see

▶ www.ledvance.com/ledlamps

Further information see

▶ www.ledvance.com/low-voltage-ledlamps

DISCLAIMER

Subject to change without notice. Errors and omission excepted. Always make sure to use the most recent release.