



# CorePro LED PLS



## CorePro LED PLS 5W 830 2P G23

The Philips CorePro LED PLS integrates a LED light source into a traditional fluorescent form factor. This product is the ideal solution for uplamplung in general lighting applications: it meets basic lighting requirements, offers significant energy savings, and is environment-friendly.

### Product data

General Information	
Cap-Base	G23
Nominal lifetime	30,000 hour(s)
Switching Cycle	50,000
Lighting Technology	LED
Flux measurement reference	Sphere
Light Technical	
Color Code	830 [CCT of 3000K]
Beam Angle (Nom)	120 degree(s)
Luminous Flux	520 lm
Color Designation	White (WH)
Correlated Color Temperature (Nom)	3000 K
Luminous Efficacy (rated) (Nom)	104 lm/W
Color Consistency	<6
Color rendering index (CRI)	82
LLMF At End Of Nominal Lifetime (Nom)	70 %
Photobiological safety according to EN 62471	RG0
Operating and Electrical	
Input Frequency	50 to 60 Hz
Power Consumption	5 W
Lamp Current (Nom)	31 mA

Starting Time (Nom)	0.5 s
Warm-up time to 60% light	0.5 s
Power Factor (Fraction)	0.9
Voltage (Nom)	220-240 V
Ballast Compatibility	EM/Mains
LED alternative to fluorescent lamp power	9/11 W
Inrush current at mains	6.6
Max. lamp no. on MCB B type 10A - Mains	116
Max. lamp no. on MCB B type 10A – EM ballast without Compensation Capacitor.	355
Max. lamp no. on MCB B type 10A – EM ballast with Compensation Capacitor.	-
Max. lamp no. on MCB B type 16A - Mains	186
Max. lamp no. on MCB B type 16A – EM ballast without Compensation Capacitor.	569
Max. lamp no. on MCB B type 16A – EM ballast with Compensation Capacitor.	-
Temperature	
T-Case Maximum (Nom)	50 °C

# CorePro LED PLS

## Controls and Dimming

Dimmable	No
----------	----

## Mechanical and Housing

Bulb Finish	Frosted
Bulb Material	Plastic
Product Length	144 mm
Bulb Shape	PL-S
Net Weight (Piece)	0.043 kg

## Approval and Application

Energy Efficiency Class	F
Energy Saving Product	Yes
Approval Marks	RoHS compliance CE marking KEMA Keur certificate
Energy Consumption kWh/1000 h	5 kWh
EPREL Registration Number	1820625
CE mark	Yes

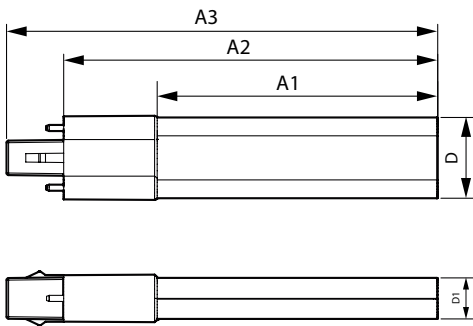
EU RoHS compliant	Yes
Flickering value (PstLM) - Flickering value as per EN 61000-3-3	1

Stroboscopic effect visibility measure (SVM)	0.4
Ambient temperature range	-20 to +45 °C

## Product Data

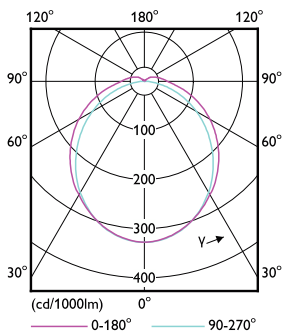
Order product name	CorePro LED PLS 5W 830 2P G23
Full product name	CorePro LED PLS 5W 830 2P G23
Full product code	872016928658000
Order code	929003756802
Material Nr. (12NC)	929003756802
Numerator - Quantity Per Pack	1
EAN/UPC - Product/Case	8720169286580
Numerator - Packs per outer box	20
EAN/UPC - Case	8720169286597

## Dimensional drawing

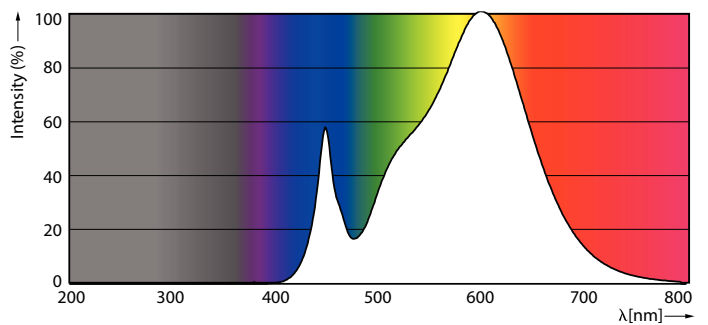


Product	D1	D	A1	A2	A3
CorePro LED PLS 5W 830 2P G23	16 mm	31 mm	108 mm	144 mm	166 mm

## Photometric data



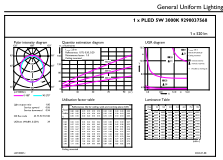
Light Distribution Diagram - CorePro LED PLS 5W 830 2P G23



Spectral Power Distribution Colour - CorePro LED PLS 5W 830 2P G23

# CorePro LED PLS

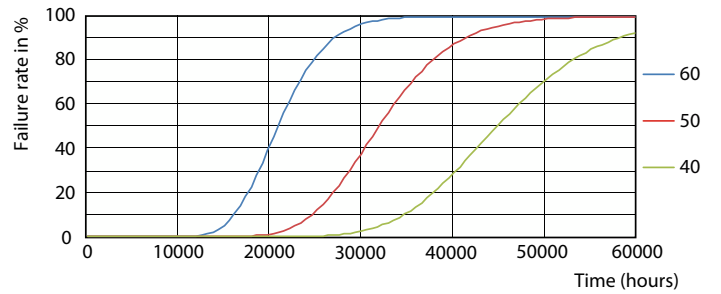
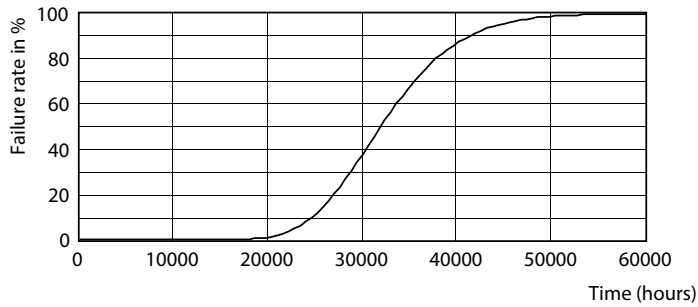
## Photometric data



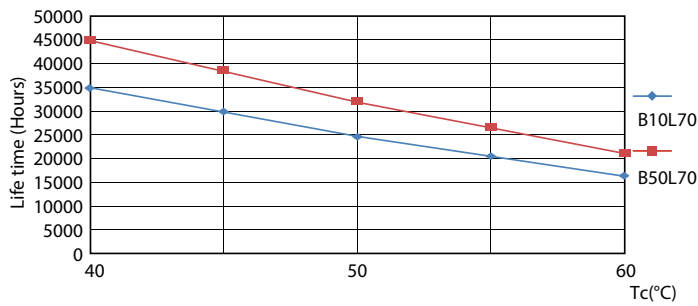
© 2024 Philips Lighting B.V. Page 11 of 11

General uniform lighting - CorePro LED PLS 5W 830 2P G23

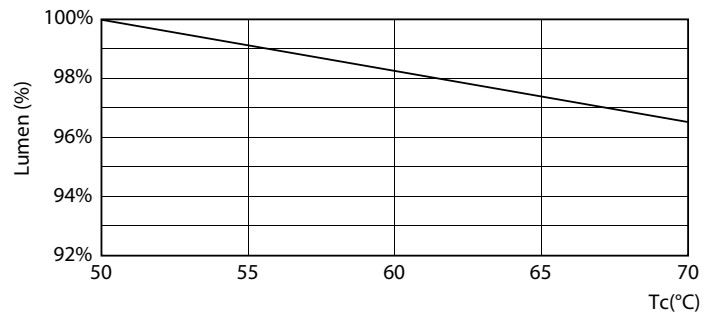
## Lifetime



Life Expectancy Diagram



FailureRate



LifetimeVsTc

Lumen Maintenance Diagram - CorePro LED PLS 5W 830 2P G23

# CorePro LED PLS

## Lifetime



Lumen Maintenance Diagram - CorePro LED PLS 5W 830 2P G23

