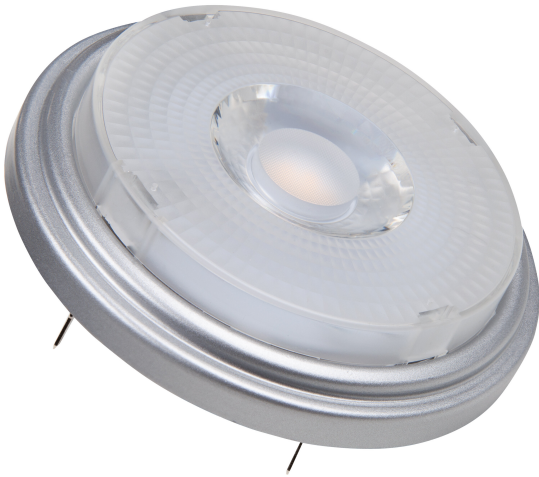


PRODUCT DATASHEET

SST AR111 50 40 ° 7.3 W/2700 K G53

GLOWdim

PARATHOM® PRO AR111 | Low-voltage LED reflector lamps AR111 with GLOWdim effect



Areas of application

- Shops and exhibition rooms
- Domestic applications
- Commercial applications
- Accent lighting
- Outdoor use in suitable outdoor luminaires only

Product benefits

- Always fitting light atmosphere by changing light color from warm white to extra warm white with dimming
- Quick, simple and safe replacement without rewiring
- Design, dimensions, luminous flux comparable to an incandescent or halogen lamp
- Low maintenance costs thanks to long lifetime
- No UV and near-IR radiation in the light beam
- Stepless dimming
- Very high dimmer compatibility, see also www.ledvance.com/dim
- Compatible with many common conventional and electronic control gears (see also compatibility list)
- Instant 100 % light, no warm-up time

Product features

- LED alternative to low voltage halogen lamps
- Dimmable



- Base: G53
- Excellent color rendering (R_a : 97)
- Lifetime: up to 40,000 h

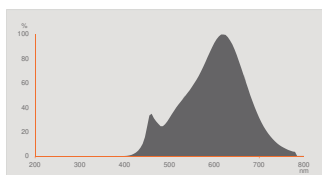
TECHNICAL DATA

Electrical data

Nominal wattage	7.3 W
Construction wattage	7.30 W
Nominal voltage	12 V
Claimed equiv. conventional lamp power	50 W
Nominal current	0.68 A
Type of current	AC
Inrush current	10 A
Operating frequency	50...60 Hz
Mains frequency	50...60 Hz
Max. lamp no. on circuit break. 10 A (B)	6
Max. lamp no. on circuit break. 16 A (B)	10
Power factor λ	> 0.50

Photometrical data

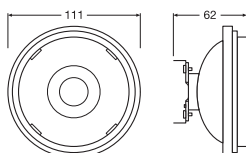
Luminous intensity	1250 cd
Luminous flux	450 lm
Nominal useful luminous flux 90°	450 lm
Luminous efficacy	61 lm/W
Lumen main.fact.at end of nom.life time	0.70
Light color (designation)	Warm White
Color temperature	2700 K
Color rendering index Ra	90
Light color	927
Standard deviation of color matching	≤ 4 sdcn
Rated peak intensity	1250 cd
Rated LLMF at 6,000 h	0.80



Light technical data

Beam angle	40 °
Warm-up time (60 %)	< 0.10 s
Starting time	< 0.1 s
Rated beam angle (half peak value)	40.00 °

Dimensions & Weight



Overall length	62.00 mm
Diameter	111.00 mm
Maximum diameter	111 mm
Product weight	143.00 g

Temperatures & operating conditions

Ambient temperature range	-20...+40 °C
Maximum temperature at tc test point	83 °C

Lifespan

Lifespan	40000 h
Number of switching cycles	100000
Lumen maintenance at end of serv	0.70
Rated lamp survival factor at 6,000	≥ 0.90

Additional product data

Base (standard designation)	G53
Mercury content	0.0 mg
Mercury-free	Yes
Product remark	All technical parameters apply to the entire lamp / Due to the complex production process for light-emitting diodes, the typical values shown for the technical LED parameters are purely statistical values that do not necessarily match the actual technical parameters of each individual product, which can vary from the typical value

Capabilities

Dimmable	Yes
----------	-----

Certificates & Standards

Energy efficiency class	A ¹⁾
Energy consumption	8.00 kWh/1000h
Type of protection	IP20
Standards	CE / CB / EAC
Photobiological safety group acc. to EN62778	RG1

¹⁾ Energy efficiency class (EEC) on a scale of A++ (highest efficiency) to E (lowest efficiency)




Country-specific categorizations

Order reference	LED111GD5040 7,
-----------------	-----------------

Energy labelling regulation data acc EU 2019/2015

Light source cap-type (or other electric interface)	G53
Length	62.00 mm
Height	111.00 mm
Width	111.00 mm

DOWNLOAD DATA

DOWNLOAD DATA	
	IES file (IES)
	LDT file (Eulumdat)
	UGR file (UGR table)

LOGISTICAL DATA

Product code	Packaging unit (Pieces/Unit)	Dimensions (length x width x height)	Gross weight	Volume
4058075448940	Folding box 1	113 mm x 66 mm x 113 mm	174.00 g	0.84 dm ³
4058075448957	Shipping box 6	238 mm x 208 mm x 123 mm	1201.00 g	6.09 dm ³

The mentioned product code describes the smallest quantity unit which can be ordered. One shipping unit can contain one or more single products.

When placing an order, for the quantity please enter single or multiples of a shipping unit.

References / Links

- For dimming conformity see www.ledvance.com/dim
 - For Guarantee see www.ledvance.com/guarantee
-

DISCLAIMER

Subject to change without notice. Errors and omission excepted. Always make sure to use the most recent release.