

PRODUCT DATASHEET

FLOODLIGHT VALUE Sensor 10 W 4000 K IP44 BK

FLOODLIGHT VALUE SENSOR | Floodlight with motion and daylight sensor



Areas of application

- Replacement for floodlights with halogen lamps
- Car parks and underpasses
- Public areas
- Building facades
- Construction areas

Product benefits

- Demand optimized illumination due to flexible and programmable sensor
- Semi-frosted, tempered glass cover for uniform illumination
- Quick and simple installation thanks to low profile, compact and light weight design
- Energy savings of up to 80 % compared to halogen lamp floodlights
- 3 years guarantee

Product features

- PIR motion detector and daylight sensor
- Luminous efficacy: up to 90 lm/W
- Symmetrical beam angle: 110° x 110°
- Mounting bracket for up to 180° tilting
- Type of protection: IP44
- Impact resistance: IK06 (10 W to 50 W), IK08 (from 100 W)



- Ambient temperature in operation: -10...+40 °C

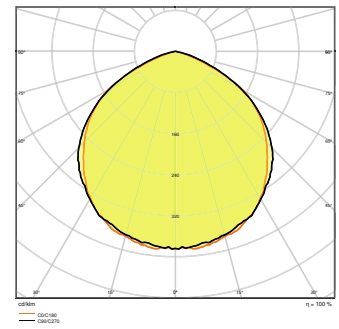
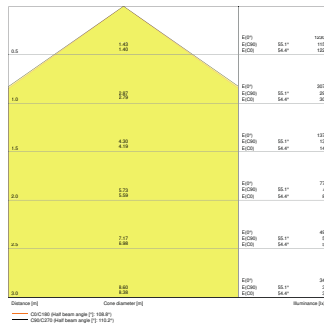
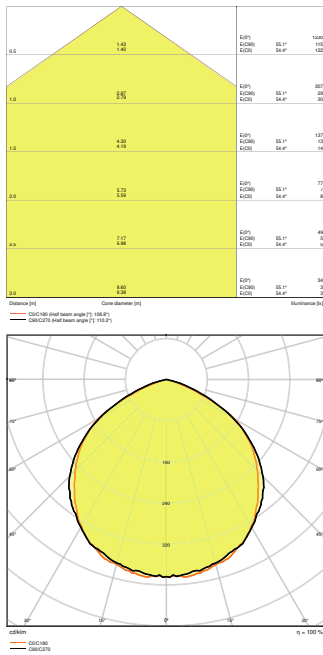
TECHNICAL DATA

Electrical data

Nominal wattage	10.00 W
Nominal voltage	220...240 V
Mains frequency	50...60 Hz
Nominal current	46 mA
Inrush current	2 A
Inrush current time T_{h50}	96 μ s
Max. no. of lum. on circuit break. B16 A	56
Max. no. of lum. on circuit break. C10 A	35
Max. no. of lum. on circuit break. C16 A	56
Power factor λ	> 0.70
Total harmonic distortion	< 35 %
Protection class	I
Operating mode	Integrated LED driver

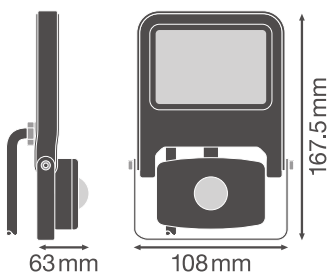
Photometrical data

Luminous flux	800 lm
Luminous efficacy	80 lm/W
Color temperature	4000 K
Light color (designation)	Cool White
Color rendering index Ra	≥ 80
Standard deviation of color matching	< 6 sdc _m
Luminous intensity	-
Flickering metric (Pst LM)	-
Stroboscope effect metric (SVM)	-
Photobiological safety group acc. to EN62778	RG1
Beam angle	110 ° x 110 °



Dimensions & Weight

Length	154.00 mm
Width	93.00 mm
Height	63.00 mm
Product weight	350.00 g
Cable length	500 mm



Materials & Colors

Product color	Black
Housing color	Black

Body material	Aluminum
Cover material	Glass
Light emitting surface material	Glass
Glow Wire Test according to IEC 60695-2-12	650 °C
Mercury content	0.0 mg

Application & Mounting

Ambient temperature range	-10...+40 °C
Type of connection	Cable, 3-pole
Type of protection	IP44
Protection class IK (shock resistance)	IK06
Dimmable	No
Mounting type	Surface
Mounting location	Wall / Ceiling / Floor
Application environment	Outdoor
Adjustable	Yes
LED module replaceable	Not replaceable

Lifespan

Lifespan L70/B50 at 25 °C	30000 h
Number of switching cycles	10000

Sensor

Type of sensor	Motion / Light
Sensor technology	Passive infrared (PIR)
Sensor detection angle	120 °
Sensor controlled switching time	10 s...10 min
Detection range of motion sensor	2...9 m
Detection threshold of daylight sensor	10...2000 lx
Sensor IP rating	IP44

Certificates & Standards

Standards	CE / CB / TÜV SÜD / EAC
Luminaire with limited surface temperature, "D sign"	No
Ball shot safe	No

DOWNLOAD DATA

DOWNLOAD DATA



Declarations Of Conformity CE



IES file (IES)



LDT file (Eulumdat)



R3D file (Relux 3D Model)



M4D file (3D Model with rotation axis)



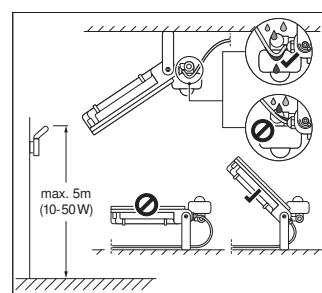
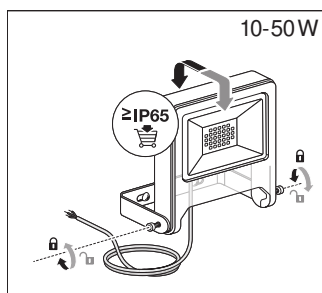
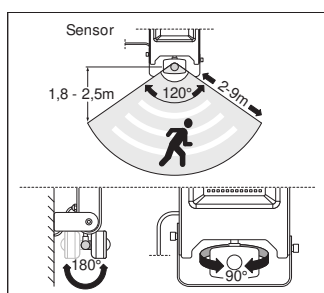
UGR file (UGR table)

LOGISTICAL DATA

Product code	Packaging unit (Pieces/Unit)	Dimensions (length x width x height)	Gross weight	Volume
4058075268685	Folding box 1	84 mm x 117 mm x 182 mm	396.00 g	1.79 dm ³
4058075268692	Shipping box 8	348 mm x 245 mm x 200 mm	3736.00 g	17.05 dm ³

The mentioned product code describes the smallest quantity unit which can be ordered. One shipping unit can contain one or more single products. When placing an order, for the quantity please enter single or multiples of a shipping unit.

ADDITIONAL CATALOG INFORMATION



References / Links

- For Guarantee see www.ledvance.com/guarantee

DISCLAIMER

Subject to change without notice. Errors and omission excepted. Always make sure to use the most recent release.

